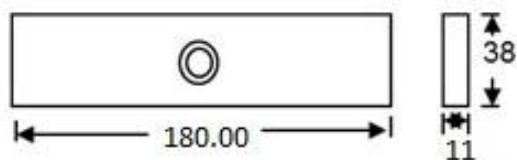
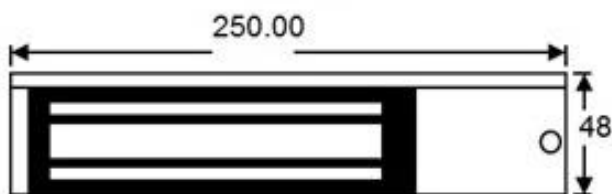




EM01(B) Single slim maglock, unmonitored

Slim single unmonitored magnetic lock. Compact design, making it ideal for all indoor applications.



(Dimensions in mm)

Features

- MOV provides spike and surge protection
- Fail-safe operation (power to lock)
- Anti-residual magnetism protection
- Top-plate, armature-plate and fixings included
- Slim design
- Dual voltage 12Vdc or 24Vdc (selectable)
- Surface mount
- Silver anodised zinc finish

Technical Information

- Current draw = 500mA @ 12Vdc / 250mA @ 24Vdc
- Voltage tolerance: +/- 15%
- Operating temp: -10°C to + 55°C
- Humidity: 0-90% non-condensing
- Weight: 2kg approx.

Related Products

EM02(B)



EM300BZL



NT100



PSU3A-12

